

# Sustainable rangeland management



Biovision  
Africa  
Trust

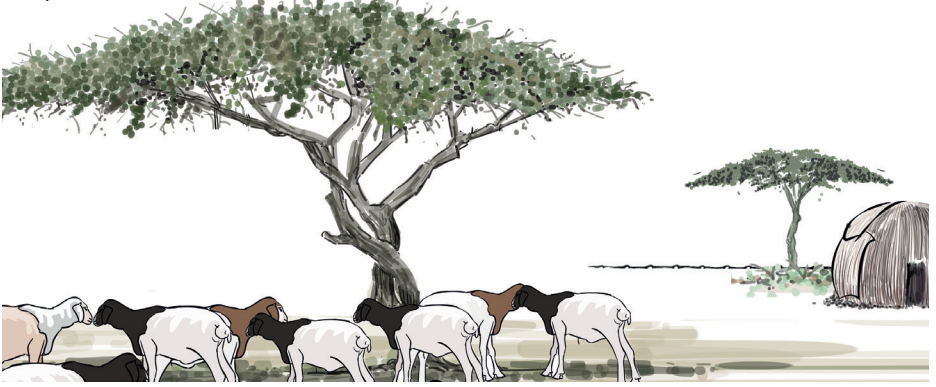


CGIAR

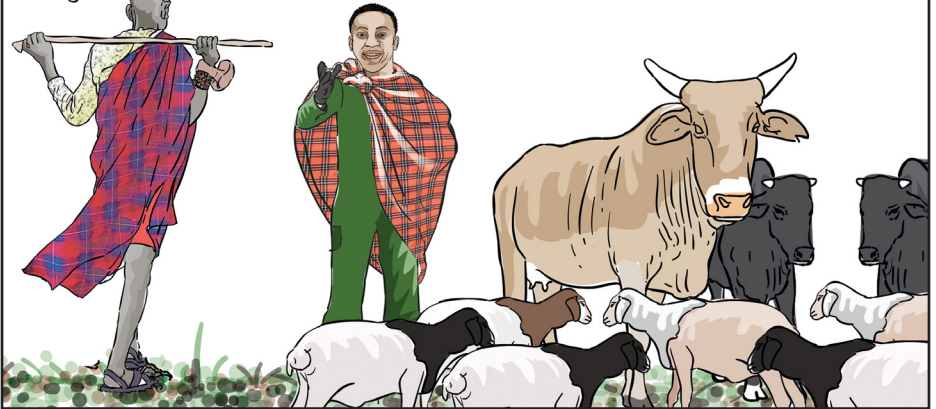
ILRI

INTERNATIONAL  
LIVESTOCK RESEARCH  
INSTITUTE

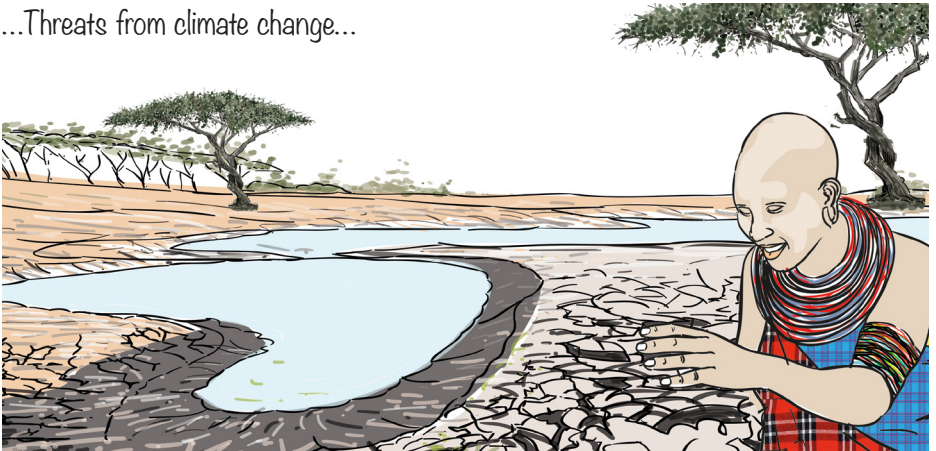
The livelihood of many farmers across the world depends on extensive livestock keeping on the World's rangelands.



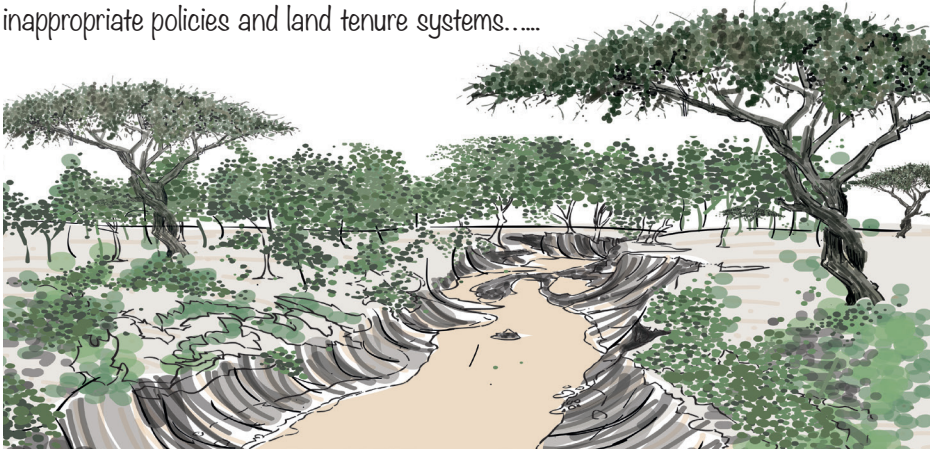
But for many years now, pastoral communities in East Africa have been at a disadvantage:



...Threats from climate change...



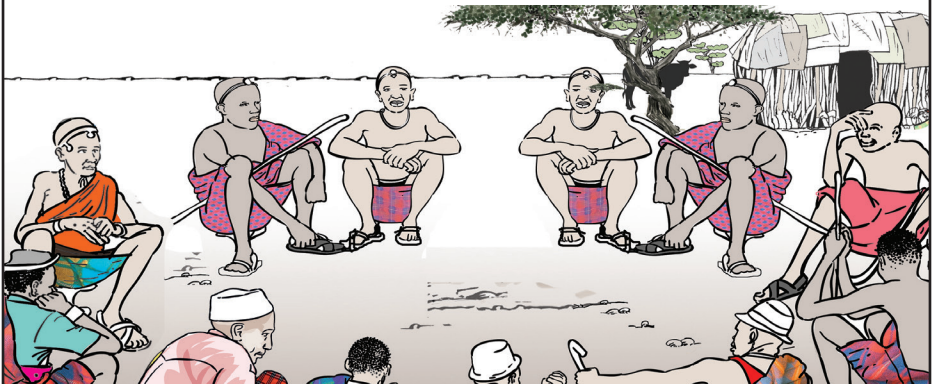
inappropriate policies and land tenure systems.....



and the undermining of traditional management practices. Over the past years, some incredible changes have been seen....



...thanks to pastoral communities organizing themselves into rangeland management units.





## Benefits of being part of a rangeland management unit

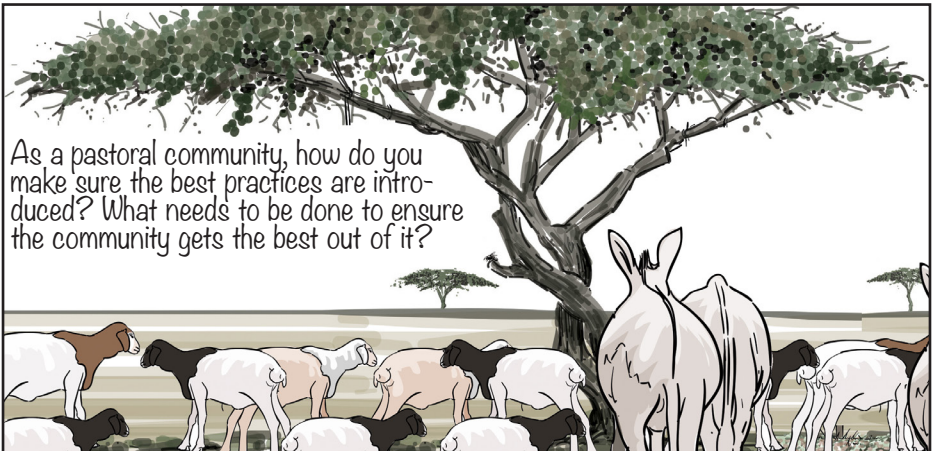
The main reason for community members coming together is to solve problems, and to find ways of improving on their livelihoods.



But how can the community rangeland management units prosper?



As a pastoral community, how do you make sure the best practices are introduced? What needs to be done to ensure the community gets the best out of it?

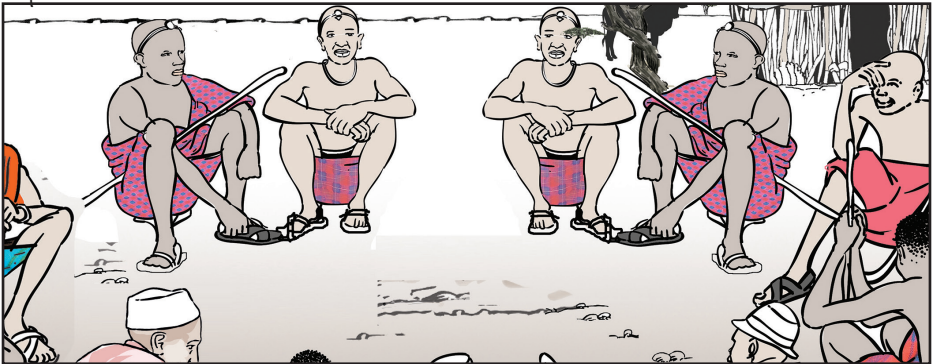




If the rangeland management unit is run well there are so many positives, with members wanting to contribute and not let down their fellow pastoralists.

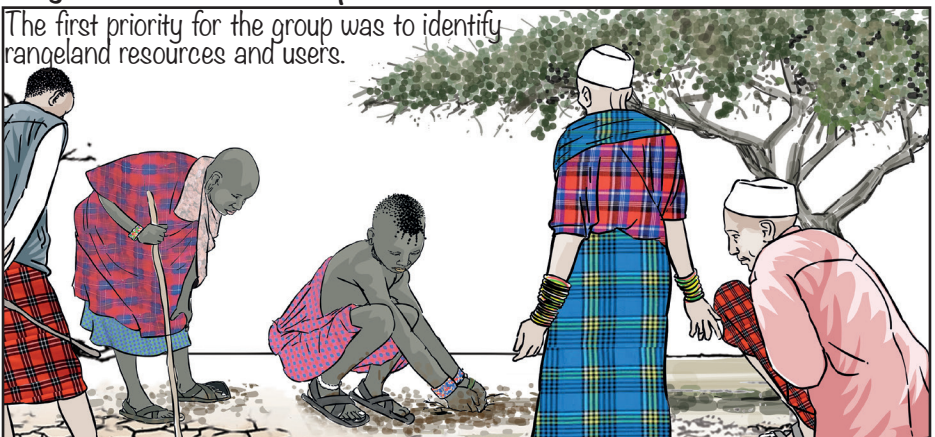


All community PRM units need to be run with well understood and agreed upon aspects...



**They decided on 8 main steps.**

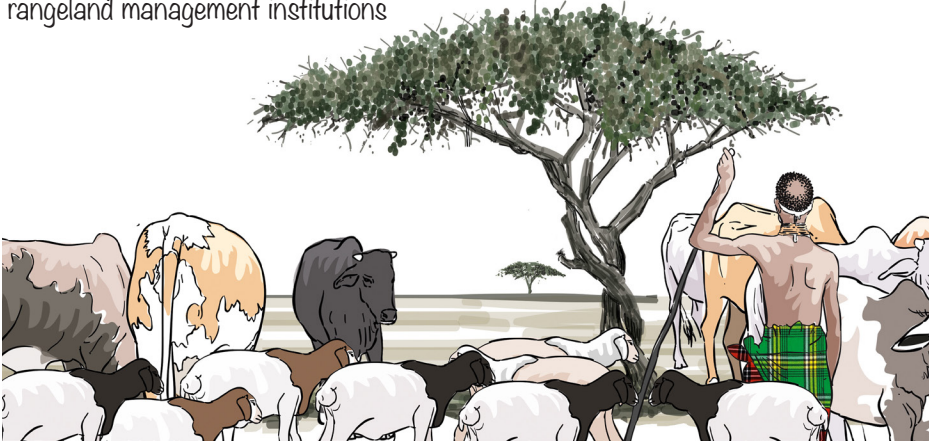
The first priority for the group was to identify rangeland resources and users.



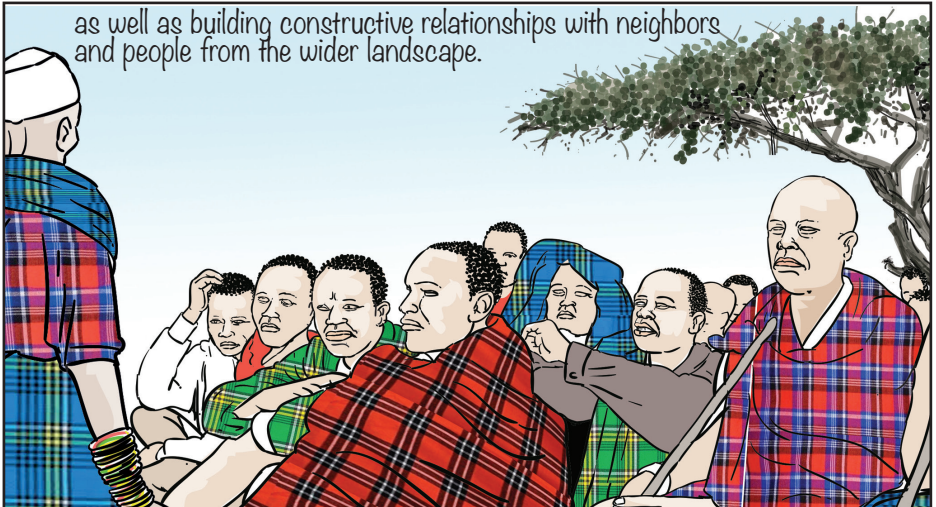
The task of understanding who the users of rangeland resources are related both to people who live within the rangeland



and others living elsewhere who bring their livestock to the area from time to time. The group reflected on the community's different interests, needs and values in the rangeland management institutions



as well as building constructive relationships with neighbors and people from the wider landscape.



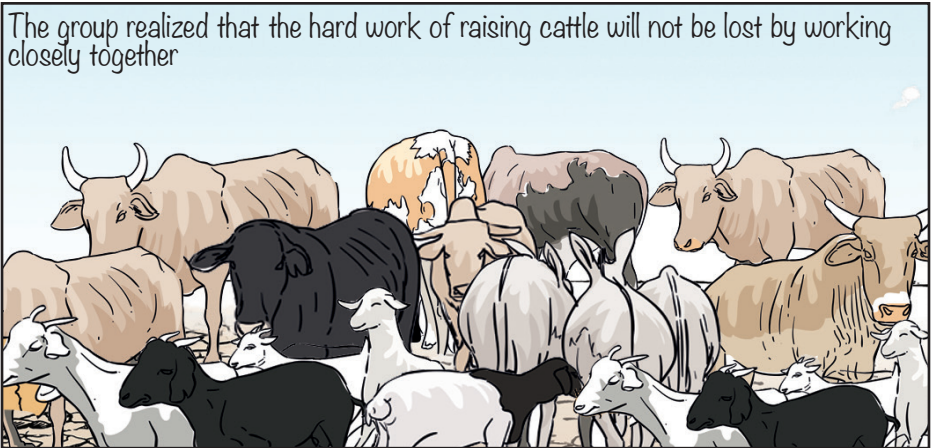


Community gatherings have been quite effective.

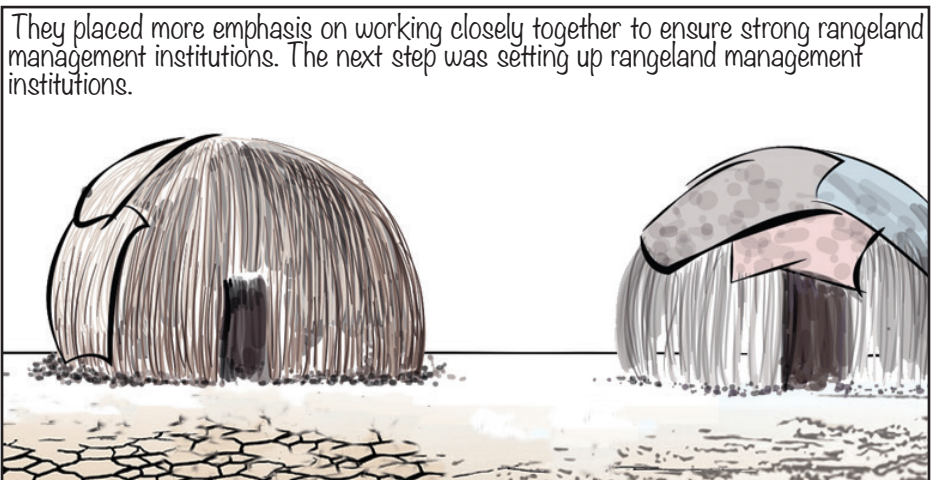


But identifying rangeland resources and users was only the beginning...

The group realized that the hard work of raising cattle will not be lost by working closely together



They placed more emphasis on working closely together to ensure strong rangeland management institutions. The next step was setting up rangeland management institutions.





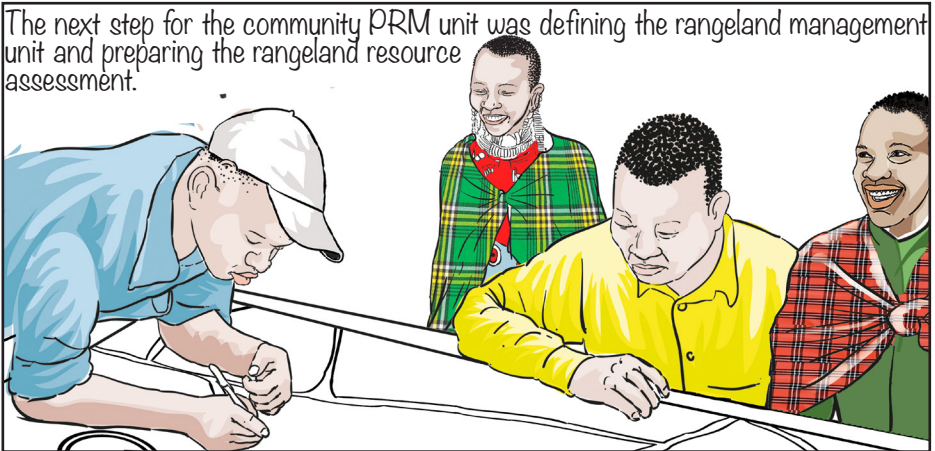
To ensure community buy-in and support, clear understanding of how decisions are to be made and accountability, the PRM leaders reached out to the community at large.



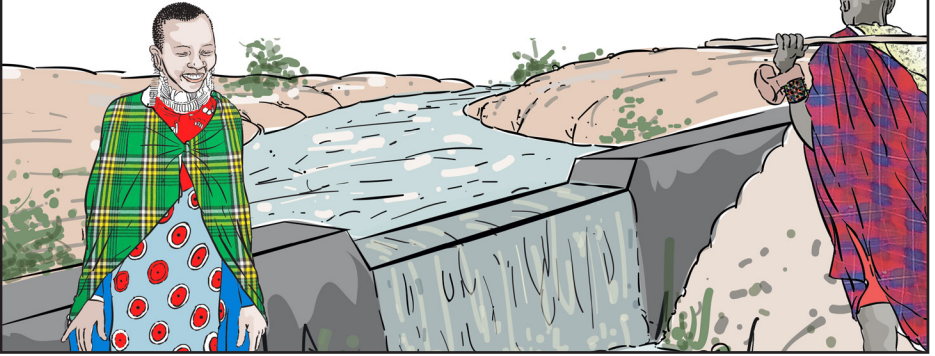
However, the group leaders also realized recognition by government and, where applicable, by traditional institutions is also important.



The next step for the community PRM unit was defining the rangeland management unit and preparing the rangeland resource assessment.



However, social and cultural considerations were also important here since the rangeland unit is not only a physical space but also a social one in which people will need to work together.



The outer boundaries of the rangeland unit also need to be accepted by neighbouring communities.



The fourth step was developing the rangeland management plan. The most important part of the management plan is a grazing plan based on local knowledge



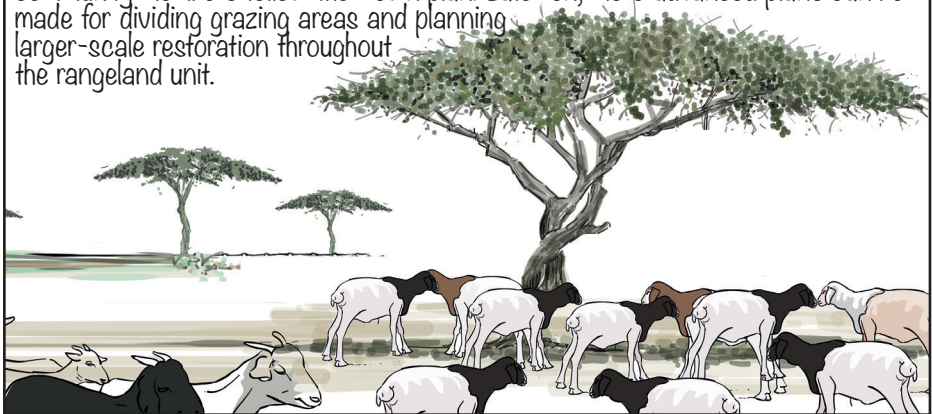
and practice of using different areas during different seasons, with local rules for enforcement reinvigorating the grazing system.



One important thing the group learnt was using a combination of proven technologies and select suitable RM practices and approaches to implement a cost-effective restoration that is holistic and scalable while minimizing investment failures.

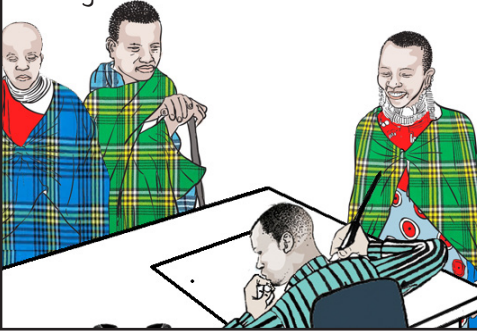


While this progress is modest, it will greatly improve rangeland condition if community members follow their own plan. Later on, more advanced plans can be made for dividing grazing areas and planning larger-scale restoration throughout the rangeland unit.





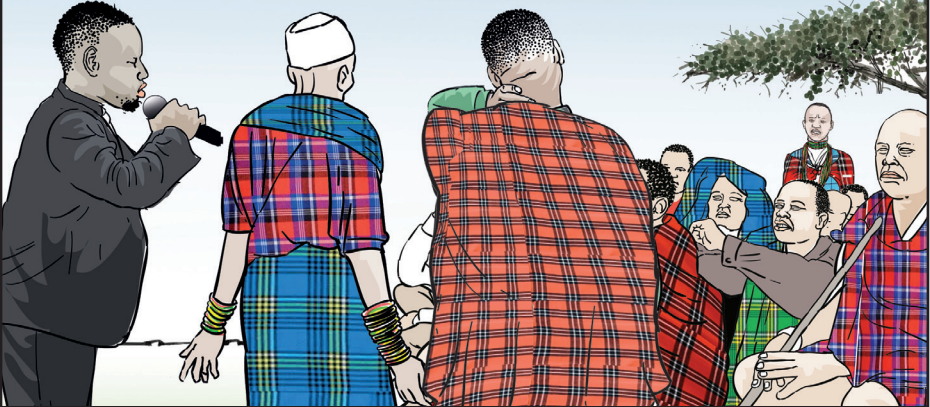
By now the unit was ready for the fifth step, establishing the rangeland management agreement



This step supports rangeland management plan by securing support from government



The community then embarked on the sixth step, new roles for communities and rangeland management advisors.



RM usually implies a shift in roles for communities, their leaders and government. By clarifying and enacting these new roles, this step further strengthened community governance of the rangelands and channels support from government and other external stakeholders.



Having successfully accomplished the first six steps, the leaders noticed that the community participation in the rangeland management was on the increase.



Together with other community members, they embarked on the 7th step...

...of arresting and reversing declining rangeland productivity.

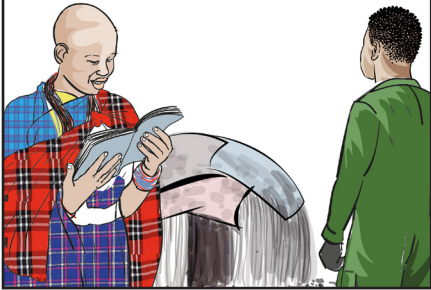


With this step, the community developed and implemented a variety of measures for restoring and maintaining the rangelands.





For the final 8th step, the community was engaged in participatory monitoring and evaluation.



This system was mainly used to help the community to continually learn and improve its efforts.



It included elements of monitoring all aspects of the PRM process such as internal decision making and governance, relationship between the rangeland management institution and the community as a whole, grazing land management, rangeland condition, relations with neighbours and other stakeholders in the wider landscape and relations with government and traditional institutions



At the end of each step, the community took time to look back at the lessons learned. They identified what contributed to their growth...and then worked out ways of improving further towards Sustainable rangeland management.



By working together as a community on rangeland management, you can overcome challenges that come with raising livestock in rangelands, improve the productivity of your livestock, making it a sustainable and worthwhile business.





Participatory Rangeland Management (PRM)

**Editor**

Caroline Mwendwa

**Content Production Editors**

David Ngome  
Musdalafa Lyaga

**Creators and writers**

Jason Sincerly  
Irene Nganga  
Flintan Fiona  
Todd Crane

**Illustrator**

Samuel Muigai (Igah)

**Date**

2022-08

**Language**

English

**Type**

Extension Material

**Accessibility**

Open Access

**Usage rights**

CC-BY-4.0



For more information contact:  
Executive Director,  
Biovision Africa Trust  
P. O. Box 30772 - 00100,  
Kasarani off Thika Rd, Nairobi Kenya  
(+254) 719052186  
info@biovisionafricatrust.org



<https://theorganicfarmer.org/>



Programme for Climate Smart Livestock (PCSL) Project  
Funded by

**giz** Deutsche Gesellschaft  
für Internationale  
Zusammenarbeit (GIZ) GmbH